

49

# SUITE,

AMERICAN YOUTH  
PHILHARMONIC ORCHESTRAS  
4026 Hummer Rd.  
Annandale, VA 22003

TIRÉE DU BALLET

1

## LE LAC DES CYGNES.

### No. 1 SCÈNE

Peter Tschaïkowsky

TACET

### Piatti e Cassa

### No. 2 VALSE

INTRADA

Tempo di Valse

Piatti

6  
3/4  
Cassa *f*

11  
*ff*

11  
*ff*

*mf* 6 *mf* 8 8

6 4 *ff*

*ff*

5 32

# Piatti e Cassa

**6** *Arms*

*p* *ff*

*p* *ff* *ff*

**7** 15 **8** 14

*p* *ff*

**9** 16 **10** 15 **11**

*p* *ff*

Fl.  
V-ni

*p* *ff*

Piatti

Cassa

3 **12** 16 **13** 14

*p* *ff*

Timp.

**14**

*p* *ff*

Piatti

Cassa

*p* *ff*

*p* *ff*

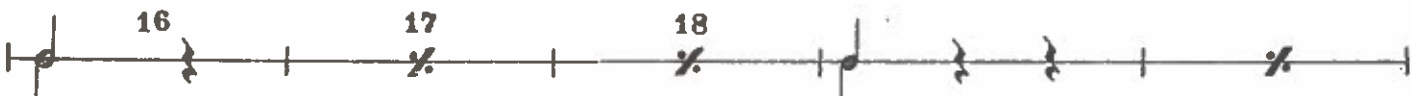
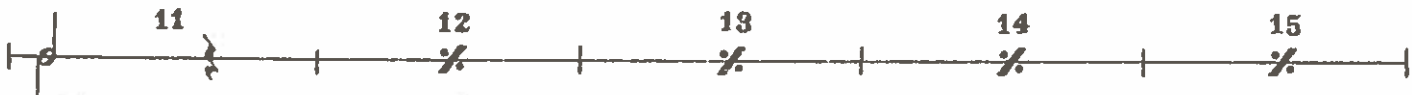
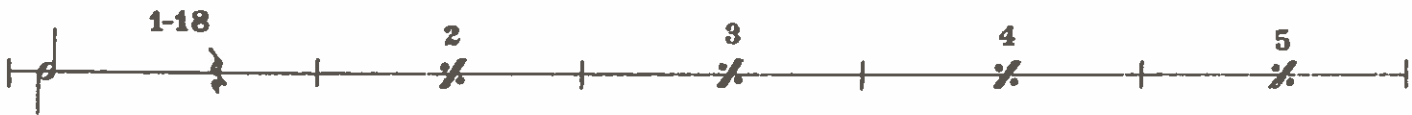
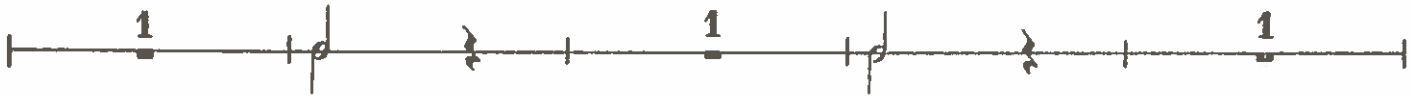
*p* *ff*

*p* *ff*

# Piatti e Cassa



15



№ 3 и № 4 TACET

No. 5 DANSE HONGROISE. CZARDAS

Piatti e Cassa

(Чардаш)

Moderato assai **1** Allegro moderato **2** Vivace  
 3 Timp. 32

7 Timp. *cresc.*

**3** Piatti *ff* Cassa

1 9 *ff*

**4** 1-15 **2** **3** *ff*

4 5 6 7 8 9

10 11 12 13 14 15

# No. 6 DANSE ESPAGNOLE

TACET

# No. 7 DANSE NAPOLITAINE

## Piatti e Cassa

Allegro moderato

*f*

1 Andantino quasi moderato 19 Molto più mosso 7 2 Presto 6 *ff*

*ff*

*f* *cresc.* *ff*

### Piatti e Cassa

Musical notation for Piatti e Cassa, consisting of four staves of rhythmic patterns. The notation uses eighth notes and rests, with a 4/4 time signature indicated in the second staff.

### No. 8 MAZURKA

*Damp f-c in vests*

Tempo di mazurka

Musical notation for No. 8 MAZURKA, consisting of five staves. The first staff is in 3/4 time with a *ff* dynamic. The second staff begins with a first ending bracket labeled '1' and a *ff* dynamic. The third staff continues the melody. The fourth staff begins with a second ending bracket labeled '2' and a *ff* dynamic, featuring a 4/4 time signature change. The fifth staff concludes with a 3-measure rest followed by first and second endings, each marked with a '1'.

### Piatti e Cassa

**3**

Musical notation for measures 3 through 7. The notation consists of five staves. The first staff begins with a dynamic marking of *ff*. The notes are quarter notes on a single pitch, with stems alternating above and below the staff. Measures 3, 4, 5, 6, and 7 are indicated by vertical bar lines.

**4**

16

*p*

Musical notation for measures 8 through 13. The notation consists of two staves. The first staff contains measures 8, 9, and 10, followed by a 16-measure rest. The second staff contains measures 11, 12, 13, and 14, which are eighth notes with stems alternating above and below the staff. A dynamic marking of *p* is placed above the first note of measure 11.

**5**

16

**6**

8

**7**

16

Musical notation for measures 15 through 17. The notation consists of one staff. Measure 15 contains eighth notes with stems alternating above and below the staff. Measures 16 and 17 are indicated by double bar lines with repeat dots. Measure 16 is a 16-measure rest, and measure 17 is an 8-measure rest.

**8**

Musical notation for measures 18 through 22. The notation consists of four staves. The first staff begins with a dynamic marking of *ff*. The notes are quarter notes on a single pitch, with stems alternating above and below the staff. Measures 18, 19, 20, 21, and 22 are indicated by vertical bar lines.

**9**

*ff*

*ff*

Musical notation for measures 23 through 27. The notation consists of two staves. The first staff contains measures 23, 24, 25, 26, and 27. The second staff contains measures 28, 29, 30, 31, and 32. Dynamic markings of *ff* are present above the first note of measure 23 and below the first note of measure 28. The notes are quarter notes on a single pitch, with stems alternating above and below the staff. Measures 23, 24, 25, 26, 28, 29, 30, 31, and 32 are indicated by vertical bar lines.

# Piatti e Cassa

**10**

*ff*

**11**

*ff*

**12** Più mosso

*540*